

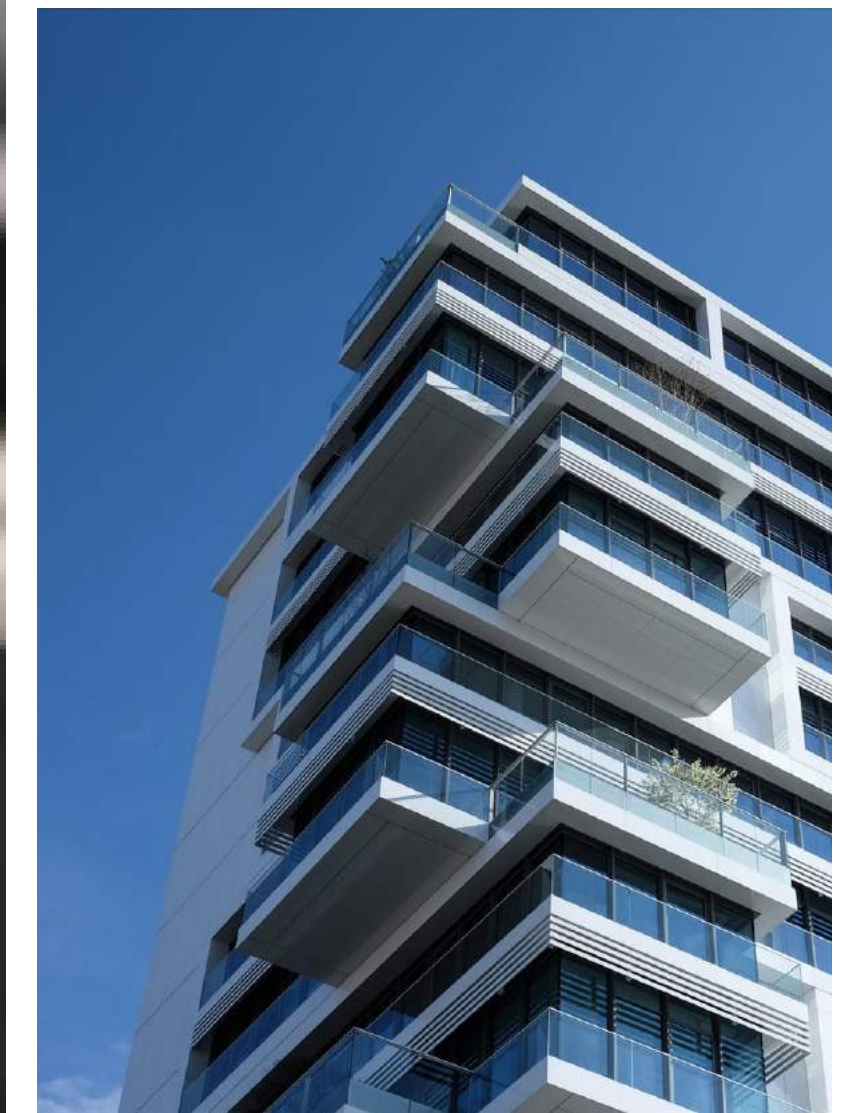


[WWW.NAVNITGROUP.COM](http://WWW.NAVNITGROUP.COM)

# NAVNIT GROUP

---

## COMPANY PROFILE





A low-angle photograph of a modern building with a blue-tinted sky and concrete structures framing the central text.

“Your Perspective is Ours”

---



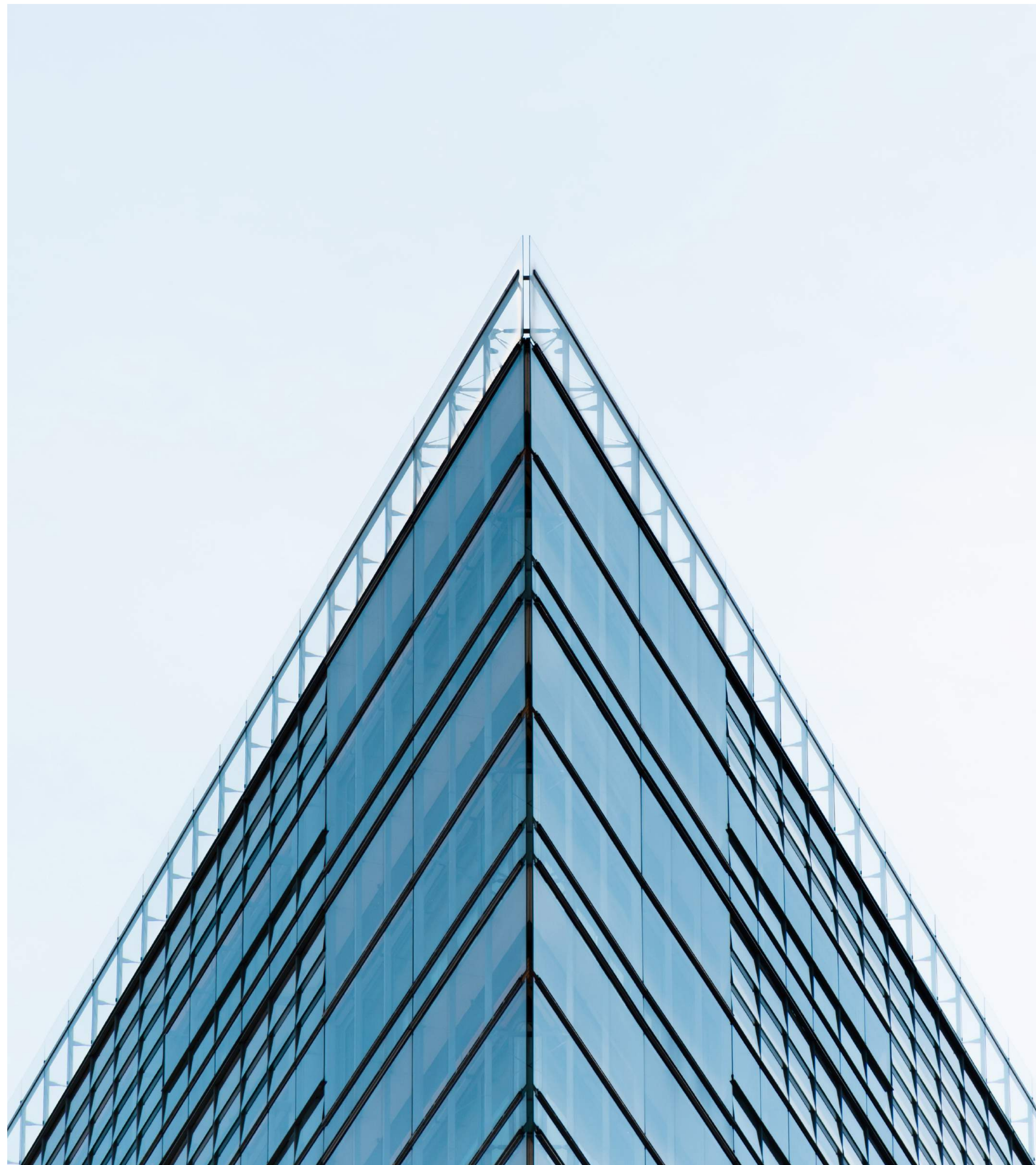


YOUR PERSPECTIVE IS OURS

# The Group

---

The Navnit Group is a well integrated network of several successful businesses operating within sectors as diverse as Automotive, Infrastructure, Marine, Adventure Sports, Aviation & Financial Services.







YOUR PERSPECTIVE IS OURS



## About Us

---

Navnit Group, a 1000 crore plus network of diverse companies is a reputed and professionally managed Mumbai based Business and Brand. It operates in the mobility segments spanning land, sea, air and allied businesses.

Supported by a team of over 3000+ skilled employees, the group sells over 12,000 vehicles each year in every category and is a significant player in the key Indian markets of Maharashtra, Gujarat and Karnataka.

Our Flagship company 'Navnit Motors' was established in the year 1986 as a customer focused, value based business, capable of responding to new challenges.

We have gained expertise of managing franchises of several leading brands like TVS, Eicher & Greaves in the past, as well as Maruti, Honda, Hyundai, JCB, BMW, Volvo and Rolls Royce amongst others.

Our recent Partnerships have been formed with BMW Motorrad, Polaris ATV's, Scania and Ferrari.

In keeping with the growing aspirations of successful Indians in this age of Globalisation, we have added an exclusive suite of mobility solutions to include aviation products including Business Jets and Helicopters, and Marine products, including Luxury Yachts and Sea Boats.

The group has also ventured into Insurance Broking and Financial Consulting, ably helmed by Industry Veterans.





YOUR PERSPECTIVE IS OURS



## *Chairman's Message*

---

### A PASSION FOR HUMAN RESOURCES

“

People are the greatest Asset & has always been at the center of my heart & hence I have always retained the HR portfolio.

”

– Navnit Kachalia  
(*Founder and CMD*)





YOUR PERSPECTIVE IS OURS

# OUR VISION

---

To expand our horizons and build  
a dynamic and globally respected  
corporation driven by professionalism,  
values and entrepreneurial energy.





YOUR PERSPECTIVE IS OURS

# OUR MISSION

To continually offer our customers world class products and a Brand Navnit Experience in our existing businesses while also creating greater choices and value with our new initiatives.





YOUR PERSPECTIVE IS OURS

# BUSINESS VERTICALS

The various Business Sectors that Navnit Group operates in contributes to its strategic depth and diversity. Some of the key sectors are Automotive, Marine, Aviation, Infrastructure, Adventure Sports, Finance & Insurance Broking.





## AUTOMOBILE

---

Get. Set. Go. Offering franchises for a range of automobile manufacturers both Indian and global. We aim to cater to all the varying needs for our customers by providing a diverse range of vehicles in every segment.



## MARINE

---

Offering an exclusive range of high-end yachts & boats. We give a wide choice to our customers for the pleasure of boating from a 17 footer boat to an 80-meter yacht.



## AVIATION

---

Over the years, Navnit Aviation has cemented its position in India as the the market leader in Private Aviation. Offering complete services from sale of the Latest Machinery to maintenance support, Navnit Aviation is the primary choice for Businesses looking to go the extra mile.





## ADVENTURE SPORTS

---

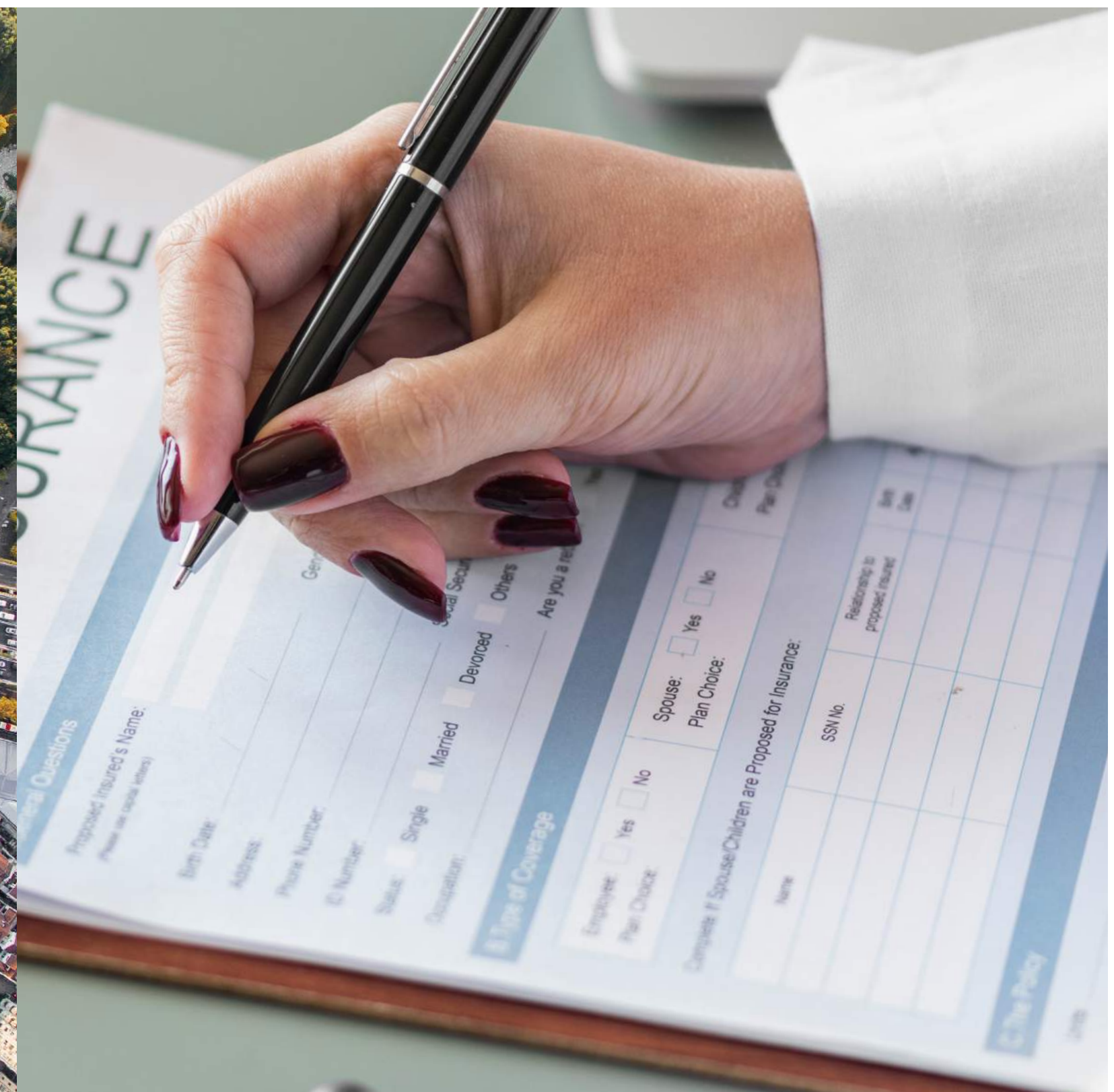
This division caters to meet the increasing demand in the adventure sports enclave in India. Providing a thrilling range of off-road and water sports vehicles These will excel in performance and durability.



## INFRASTRUCTURE

---

Nanvit Infra Projects Pvt.Ltd is a new-age real estate organization providing a wide spectrum of solutions & services in various facets of Indian real estate business.



## POLICIES 365

---

### INSURANCE & BROKING

---

We as a Composite Broker, deal with all Insurers - both from Private as well as Public sector of General, Life and Reinsurance Insurance Companies.



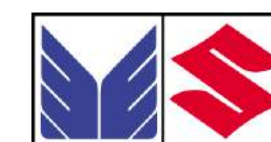


YOUR PERSPECTIVE IS OURS

# BRANDS REPRESENTED

---

NEXA



**BOMBARDIER**







## **An Icon of Style, Luxury & Speed**

The Ferrari logo with its iconic Prancing Horse symbolizes Italian luxury, exclusivity, performance, design and quality the world over. A legend built on decades of sporting successes and the inimitable style of our cars, a source of inspiration for millions of enthusiasts.

---



---

## **The Epitome of Luxury**

The most exclusive luxury automobile manufacturer in the world. Renowned for supreme quality, exquisite hand craftsmanship and meticulous attention to the detail.







## Sheer Driving Pleasure

Driving pleasure – that is what drives us. At BMW, driving pleasure comes from the perfect combination of sporty dynamics, ground-breaking innovations and breath-taking design

---



---

## The Original Pocket Rocket

Maximise the experience while focussing on the essential. Clever solutions with iconic design encourage a life full of meaningful experiences. MINI unlocks the city, delivering to your individual needs.







## The Art of Performance

Jaguar Land Rover is a company that brings together two much loved, highly prestigious British car brands. After Tata Motors acquired Jaguar and Land Rover from Ford in 2008, it merged the two marques into a single company and its success has flourished, with memorable vehicles and innovative technologies that add to a long-lasting legacy.

---



---

## Moving The World

Scania is a world-leading provider of transport solutions, including trucks and buses for heavy transport applications combined with an extensive service offering. Scania offers vehicle financing, insurance and rental services to enable our customers to focus on their core business







**Adventure. Passion. Work. Play.**

The world leader in powersports and off-road innovation. For millions of people around the world, Polaris has become synonymous with adventure and passion, in both work and play.

---



## **Two Wheels to Move the Soul**

BMW Motorrad is the motorcycle brand of the German company BMW, part of its Corporate and Brand Development division. Producing motorcycle since 1923, BMW Motorrad still remains the choice of the hardcore biking demographic, and retains its cult status for its rich heritage.







# BOMBARDIER

## The Only Way to Travel Business

With a heritage dating back to the very first business jet, Bombardier Business Aircraft has at its core a forward looking, innovative spirit that is embodied by its people and the aircraft they have proudly manufactured, sold and supported with the expertise handed down over the last 50 years.

---



---

## A Statement of Lifestyle

Princess Yachts are a British luxury yacht manufacturer based in the city of Plymouth. Whether it's a Princess V39 or Princess 52 you will arrive in style.







YOUR PERSPECTIVE IS OURS

# A STRONG NETWORK

**20+**  
BRANDS

Market leading brands from  
India & across the world.

**3**  
STATES SERVED

Industry leader in three key states  
of operations with maximum  
market share.

**35+**  
SHOWROOMS

Combined Group sales exceeding  
3 lakh+ vehicles across  
3 Key States.

**3000+**  
EMPLOYEES

Equal opportunity employer  
to the most passionate and  
progressive individuals.





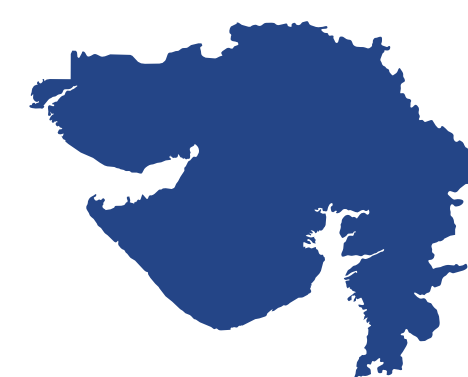
YOUR PERSPECTIVE IS OURS



---

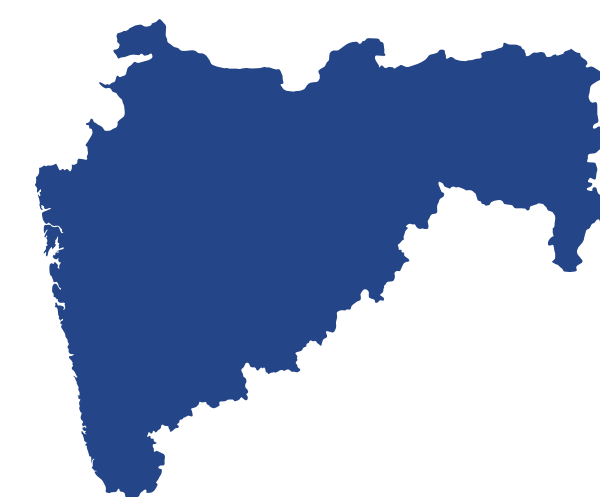
**3 lakh+**  
Cars Sold

Supported by a team of more than 3000 skilled employees, the group has sold over 3 lakh vehicles and is a significant player in the key Indian markets of Maharashtra, Gujarat and Karnataka.



**GUJARAT**

---



**MAHARASHTRA**

---



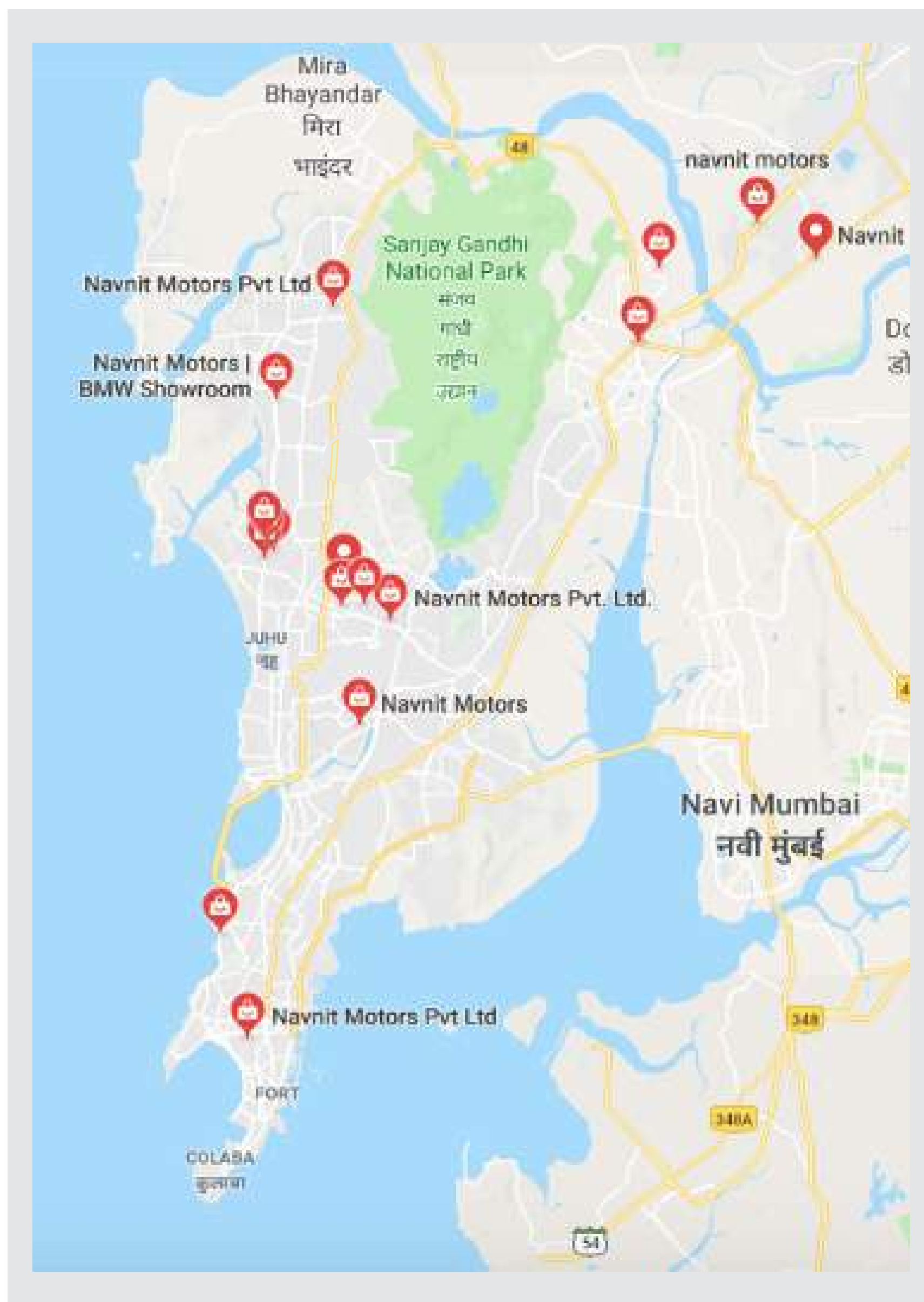
**KARNATAKA**

---





YOUR PERSPECTIVE IS OURS



## OUR BASE

---

From the humble beginnings of the organization, Maharashtra has been the home ground of Navnit Group for over 3 decades.

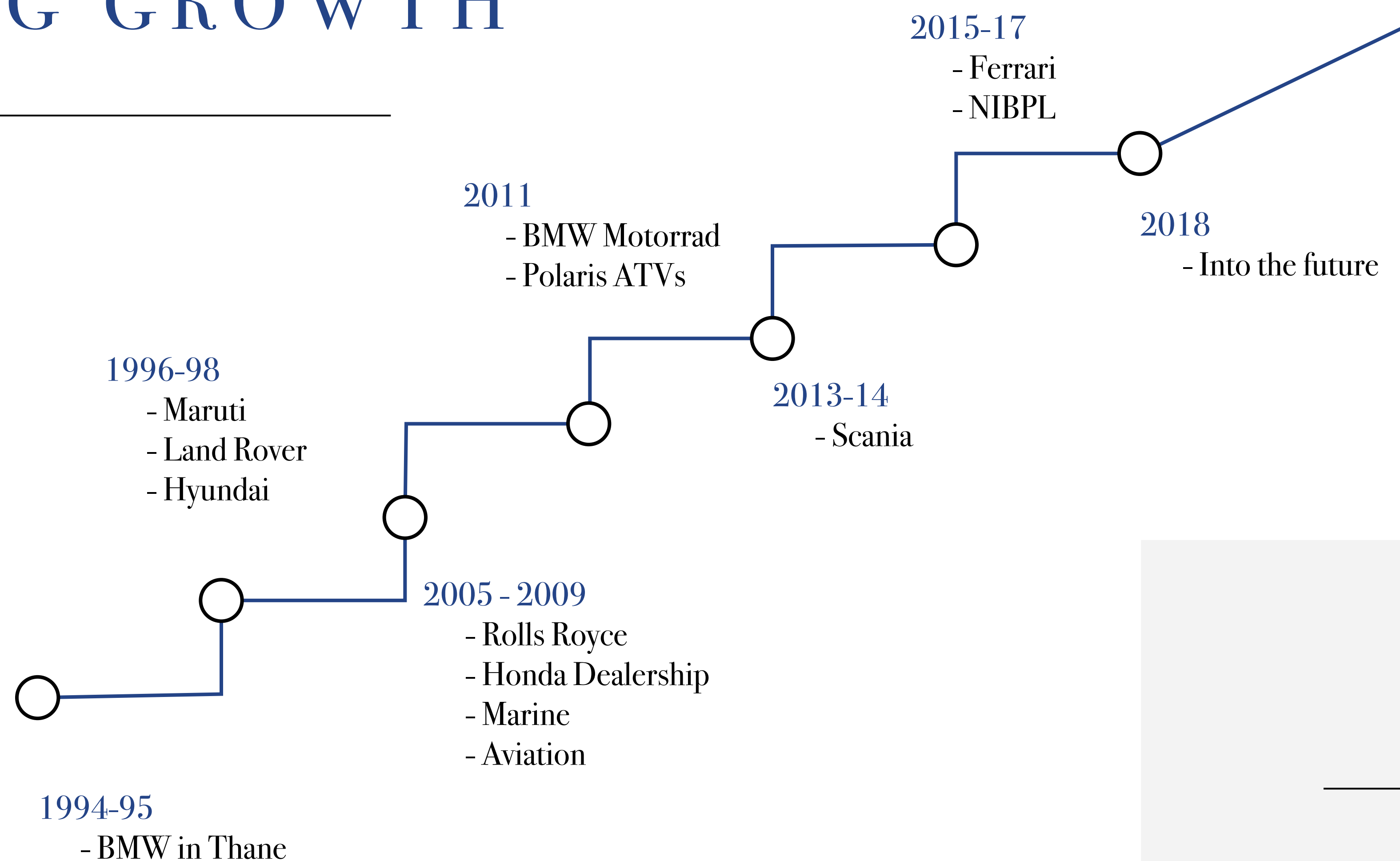
Headquartered in Mumbai, Navnit has an extensive footprint in the state, with more than 30 dealerships and technical facilities for servicing all of the group brands. Apart from Automotive, Maharashtra also serves as the development base for Infra Projects, Aviation and Marine Business, as well as for the Finance and Insurance sectors.





YOUR PERSPECTIVE IS OURS

# AN ERA OF BIG GROWTH







YOUR PERSPECTIVE IS OURS



As a rapidly expanding business group with deep roots in the Indian economy, the Navnit Group is deeply committed to growing, seeking appropriate business opportunities and serving emerging aspirations in India. We believe that the future will be an exciting time for our nation and we will endeavour to play an integral part in it.

# INVESTING IN THE FUTURE

---





YOUR PERSPECTIVE IS OURS

# CORPORATE CITIZENSHIP

---

At Navnit Group, we are committed to the principles of enlightened corporate citizenship in our interactions with all our stakeholders and the wider community. A few years ago, realising the dearth of skilled workmen in the auto care business we established the Navnit Academy to offer training in this key area. We believe this has helped raise efficiency standards and skill sets in the industry as a whole.

We believe in encouraging our employees to give their best and provide regular training sessions and interactions with the senior management.

We have also instituted various scholarships and assistance schemes to look after the special needs of our employees.

In addition, we believe we also have a larger responsibility to give back to society. Following the ideals set down by our ancestors and Shri Liladhar D. Kachalia in particular, we have established the Navnit Foundation with a mandate for providing healthcare and education to the needy and deprived sections of society.







YOUR PERSPECTIVE IS OURS

# WORK WITH NAVNIT

---

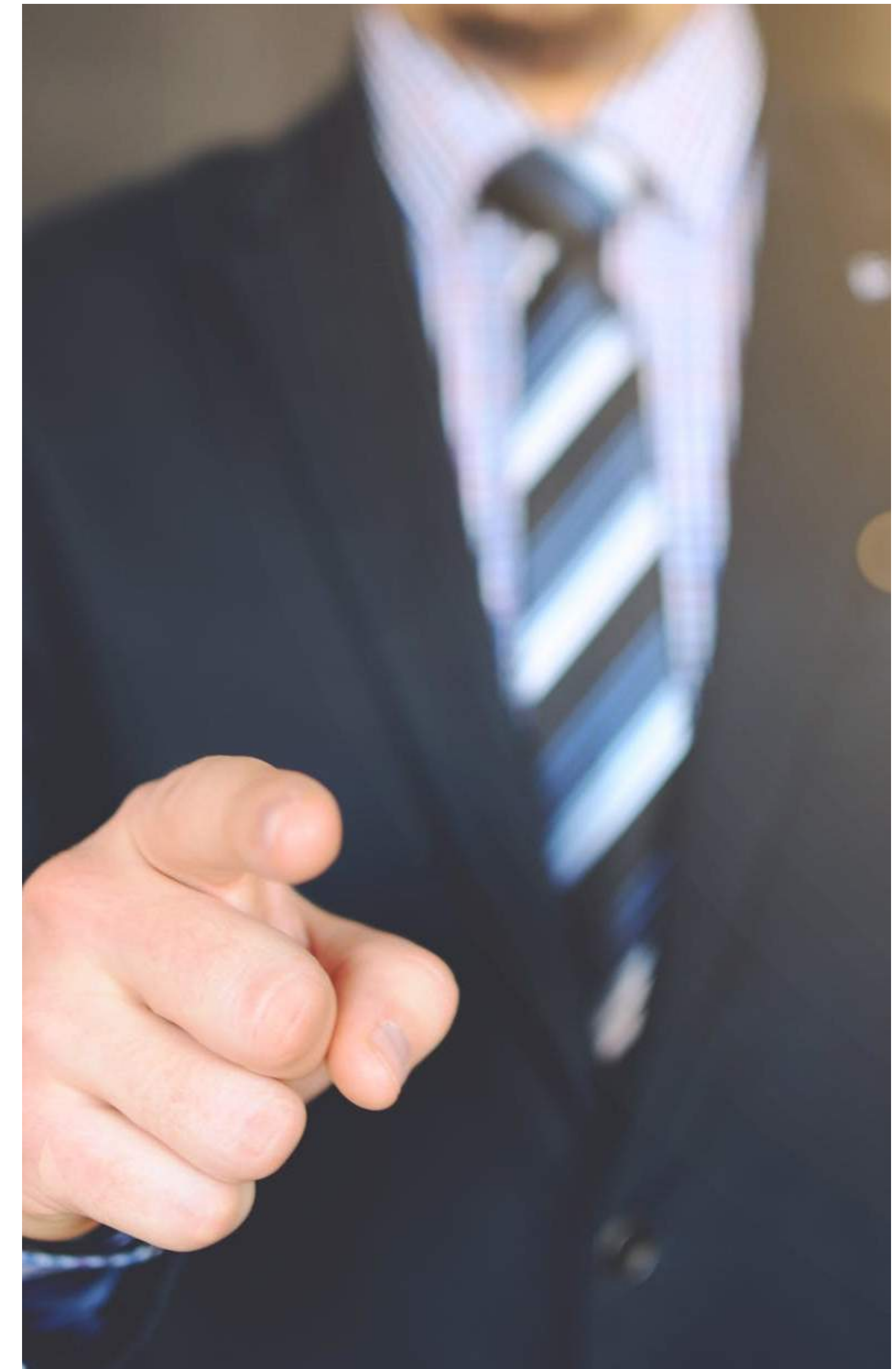
The Navnit Group is an equal opportunities employer and is committed to pursuing progressive peoples' policies and practices.

Our employees are our greatest asset and we provide them with a supportive and challenging environment with plenty of opportunities for training and improvement on the job. We have also instituted employee interactions and special events through the year which facilitate the creation of goodwill in the organisation.

Significantly, many of our employees have opted to remain with us through the many growth phases of the Group. This has enabled us to retain the personal touch and maintain a continuity of business values, critical in a sector which is focused on the customer and a range of other external stakeholders.

We are committed to the principles of merit, irrespective of caste and creed.

We encourage our employees to continually better themselves while pursuing their personal career objectives and simultaneously contribute to the growth of Brand Navnit.





# CONNECT WITH US

---



## Navnit Group Corporate Office

Address: C Wing, Waterford Building,  
CD Burfiwala Road (Juhu Lane)  
Andheri (West)  
Mumbai - 400058

Phone : 022-66777777

Email : [info@navnitgroup.com](mailto:info@navnitgroup.com)





YOUR PERSPECTIVE IS OURS

N E X A



**BOMBARDIER**

